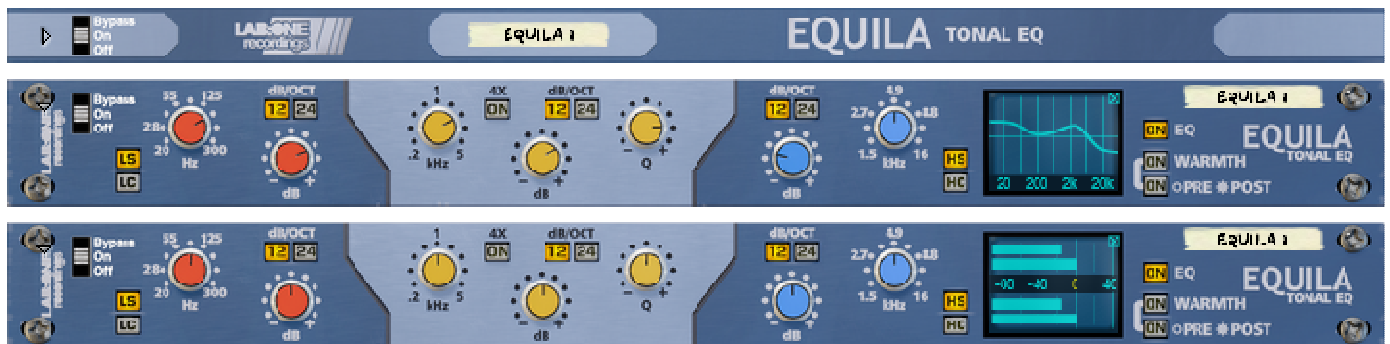


EQUILA TONAL EQ



Rack Extension for Reason Instruction Manual



Contents

<u>Page</u>	<u>Subject</u>
3:	Thank You, Acknowledgements & Dedications
4:	Introduction
5:	A brief guide to Equila
9 :	Working with Equila
12:	Using the Dual Function Display
13:	Selecting the different slopes and using the controls
14:	CV Inputs & controls
15:	MIDI Implementation chart
16:	How to 'latch' your own MIDI via Remote Overriding
18:	Appendix 1: Instrument frequency ranges
20:	Appendix 2: EQ Tables
22:	Licence Agreement

THANK YOU

We thank you for expressing your confidence by purchasing one of our equalizers; in this case the Equila 3 Band Tonal EQ. This 2-channel high-quality equalizer was designed with our experience of both filtering capabilities in the digital realm as well as the crafting of audio for all types of users; producers, engineers and artists alike.

We hope you continue to enjoy using Equila in your projects for now and for future.

Lab:One Recordings © 2017

ACKNOWLEDGEMENTS

Thanks to all of the Lab One Alpha Team for all the testing, comments, suggestions and feedback, as well as aiding us to bring our products to you.

Propellerhead Software (for Reason, the SDK and the concept of the Re)

Presets designed by:

DEDICATIONS

This Re is dedicated to all the Propellerhead Reason users & forum threaders, friends, & colleagues we have spoken to over the years.

DjFresha: Thanks goes out to my studio buddies; Dos aka Ocro, Dj EQ, for the support & feedback, shouts go out to all who know me; Ben 'Devious', Andy 'Ruthless', Scott 'Sniper', the REBIRTH crew and SHTUM massive (Pete C, Kalist, Aybee), and all who continue to work with and support us.

Also not forgetting my family for the support, and last but by no means least, my wife Alicia who now enjoys the fact that we can bring products to your guys faster is now a happy bunny :D

Now let's get into Equila....

Introduction

Equila is a dedicated rack unit, built as a Rack Extension for the Propellerhead Reason environment. This device has a maximum of what would be 1U space in the real world – the classic 19in rack unit. Being a Rack Extension (Re), this gives you various options of versatility within your projects.

Equila features at a glance:

- 3 band stereo-linked filters, dedicated to their audio spectrum regions (Low, Mid and High band ranges)**
- 2 Filter modes for Low and High bands (shelving and passing)**
- 2 slope modes for all 3 bands (12dB/octave & 24dB/octave)**
- Frequency multiplier for Mid band, to allow high frequency control**
- Dedicated CV controls linking to all knob controls**
- Dual Function Display, for input & output metering, plus EQ curve plot mode**
- 'Ears only' mode to disable the display**
- True stereo processing (allowing for dual mono inputs to be process together)**
- EQ enable mode**
- Warmth function with pre- and post-EQ routing**
- Rear 'state' indicator for the device (perfect for back-of-the-rack users)**

All these controls are adjustable to suit your application, and these settings can be stored as part of a Combinator preset (when combined) as well as settings stored within your project. Due to the minimal amount of controls needed, the need for presets is not required due to the efficiency and speed you can dial in your settings.

Equila features two audio inputs and two audio outputs, which are processed independently; this allows you to have two totally separate signals being processed together at the same time using one set of controls. Mono operation is also an option (see 'How to connect audio' section).

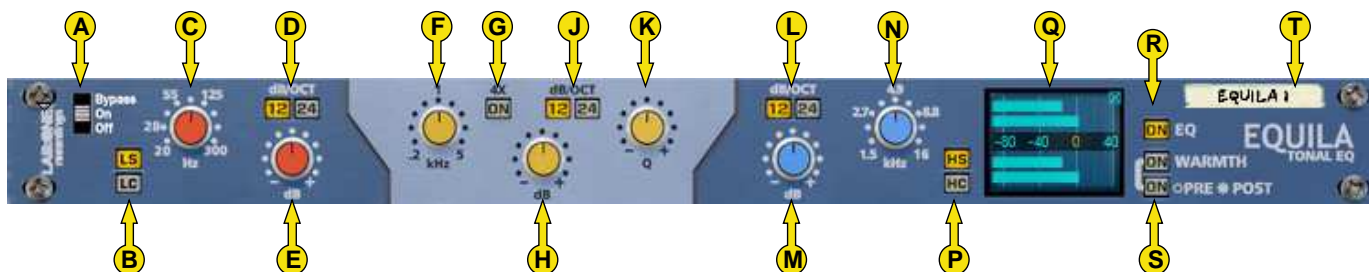
For reference, the 3 band ranges of Equila are:

- Low band: 20Hz to 300Hz**
- Mid band: 200Hz to 5kHz / 800Hz to 20kHz (with frequency multiplier active)**
- High band: 1.5kHz to 16kHz**

Equila is designed to be a transparent effect, meaning that if no adjustments are made on the device, the audio passing through the effect is 'clean' and has not been affected by the equalisation filters or the low pass or high pass filters. This is the ideal, so that no coloration is applied to the sound.

A brief guide of Equila

Equila is based on a 3 band equalizer unit that may be commonly found on console units as well as 19in rack units.



The Front Panel

- A] **Bypass Switch (Bypass effect / Enable effect / Disable effect)**
- B] **Low Band Filter mode selector**
- C] **Low Band Frequency**
- D] **Low Band Slope**
- E] **Low Band Gain**
- F] **Mid Band Frequency**
- G] **Mid Band Frequency Multiplier**
- H] **Mid Band Gain**
- J] **Mid Band Slope**
- K] **Mid Band Resonance**
- L] **High Band Slope**
- M] **High Band Gain**
- N] **High Band Frequency**
- P] **High Band Filter mode selector**
- Q] **Dual Function Display**
- R] **EQ Enable**
- S] **Warmth Enable and Routing mode**
- T] **Device Label**

The folded front view includes the Bypass switch (A) and the Device Label (T).

Each band comes with a frequency setting. This determines the point of 'action' where the filter starts to work on the signal. Depending on the Slope, the Mode, the Frequency and in the case of the Mid Band Resonance control determines the final effect on the processed audio.

Low Pass and High Pass filters attenuate the signal below (for Low) and above (for High) up to the frequency centre. This can help to remove rumble when using Low Pass, while cutting harsh or headroom eating high end frequencies can give you more level to play with.

Low Shelf and High Shelf filters work very much alike the tone controls you find on high grade studio equipment to more commonly found consumer equipment such as radios, TVs, home stereo systems and personal audio devices. Boosting or cutting with shelf filters can make equalizing sound more natural than Low Pass / High Pass filters, which can make the listening experience more enjoyable.

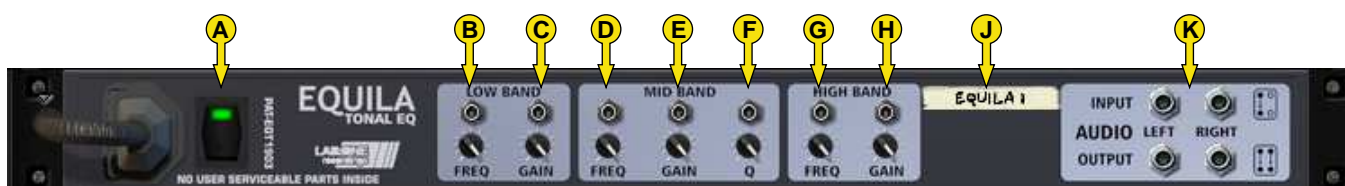
The Mid Band filter is a parametric EQ filter which can be very broad (low Q, 12dB setting) to very tight (high Q, 24dB setting) which can allow a wide range of applications, from a mid-frequency tone control style setting to a surgical treatment tool.

Each band employs a gain control of +/-18dB level. When used with the Low Pass / High Pass filters, the signal post filter can be attenuated. This can be useful if you find that cutting some frequencies results in a lower signal level so the gain control can readjust the level back up. **NOTE: CARE MUST BE TAKEN WHEN SWITCHING FILTER MODES WITH HIGH GAIN.** If you wish to change modes, stop audio processing, change the mode and be aware of the gain control setting before applying to your signal. This method will ensure that you save your speakers but more importantly your ears.

The Warmth function introduces a more 'analog' style sound akin a real-world rack counterpart. Warmth also allows for high drive without overloading (softclipping). The routing option allows you to choose if you want to apply warmth to the signal post EQ processing or pre-EQ processing. The key difference is that when in POST mode, the warmth level is a constant, whilst in pre-EQ mode the warmth function is applied to the signal then the EQ controls can affect the 'warmed up' audio. Try this out to see which you prefer.

The EQ Button allows you to bypass the equalization process within Equila, so you could use just the Warmth section on audio alone.

The Dual Function Display allows the user to change the view of Equila from the EQ plot chart to audio metering, by simply clicking the display.



The Back Panel

- A] State indicator
- B] Low Band Frequency CV + trim controls
- C] Low Band Gain CV + trim controls
- D] Mid Band Frequency CV + trim controls
- E] Mid Band Gain CV + trim controls
- F] Mid Band Q CV + trim controls
- G] High Band Frequency CV + trim controls
- H] High Band Gain CV + trim controls
- J] Device Label
- K] Audio Input & Output sockets

The Audio Inputs & Outputs [K] are used to connect Equila to various modules within the Propellerhead Reason environment, in a form of either an insert or a send effect

Connecting up the audio sockets can be done automatically by Reason, or can be manually done to your own requirements. Mono devices, when connecting a new Equila to them, can automatically route their mono signal in to the left channel, and the left output of Equila is connected to the originally wired socket of the mono device, closing the audio loop. Stereo devices can automatically connect their outputs to the left and right inputs of Equila, and Equila completes the audio chain by connecting its outputs to the originally connected stereo pair sockets.

Each audio socket processes the audio separately from each other within Equila. Left and right channels never mix within Equila. This ensures that if you have two separate mono devices connected to Equila, the settings on Equila affect both channels at the same time with the same amount of equalization effect.

How to connect audio

To connect Equila you can use Reason's own auto-connection system, and Equila will decide the best way to auto-wire; if you have a mono-output device (Subtractor, for example), and you wish to add Equila to it, Equila will auto-connect the Subtractor output to the Left input, and then continue to route the Left output of the Equila to the Left input of the mix-channel (or next device in your processing chain).

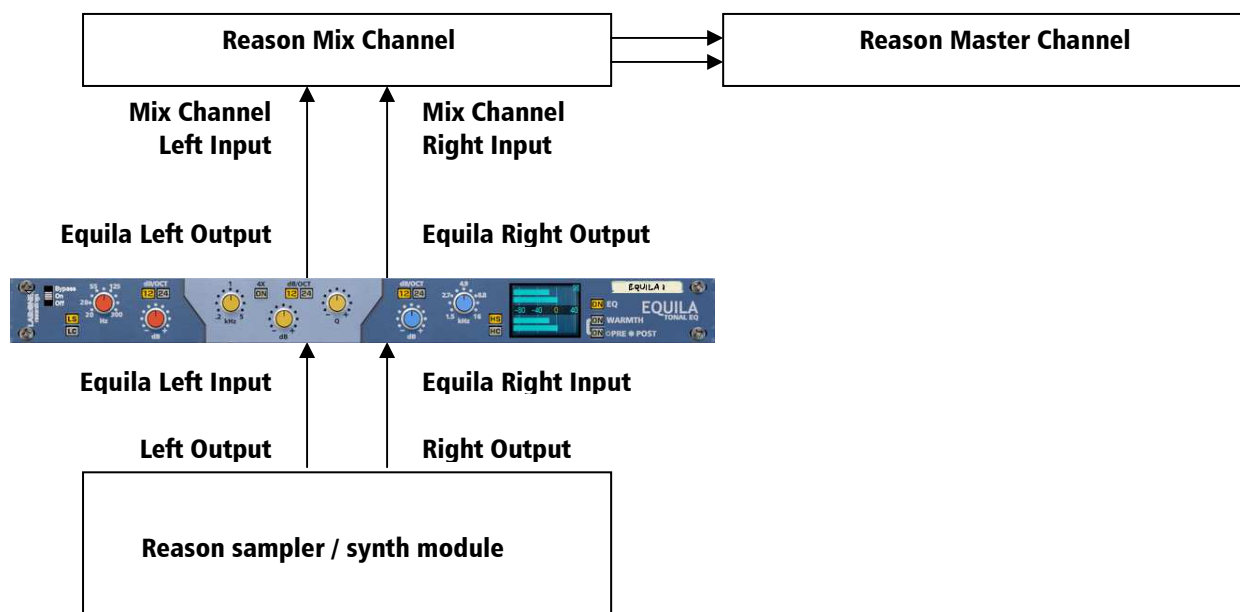
You can do any of the following to create Equila;

- a) right-click (Win) / CTRL-click (Mac) on the device, select 'Create Device', choose sub-menu 'Studio Effects', and select 'Equila 3 Band Tonal EQ' from the listing.
- b) with the device selected, use the 'Create', select 'Create Device', choose sub-menu 'Studio Effects' and select 'Equila 3 Band Tonal EQ' from the listing
- c) using the Tool Palette in Reason (F8), select 'Studio Effects' when in the 'Devices' tab, and locate the 'Equila 3 Band Tonal EQ' device, click on the icon and drag it to the device you wish to add it to.

Working with Equila

Equila is designed to be a flexible device, allowing it to be used however you see best fit. Only typical applications will be listed in this manual.

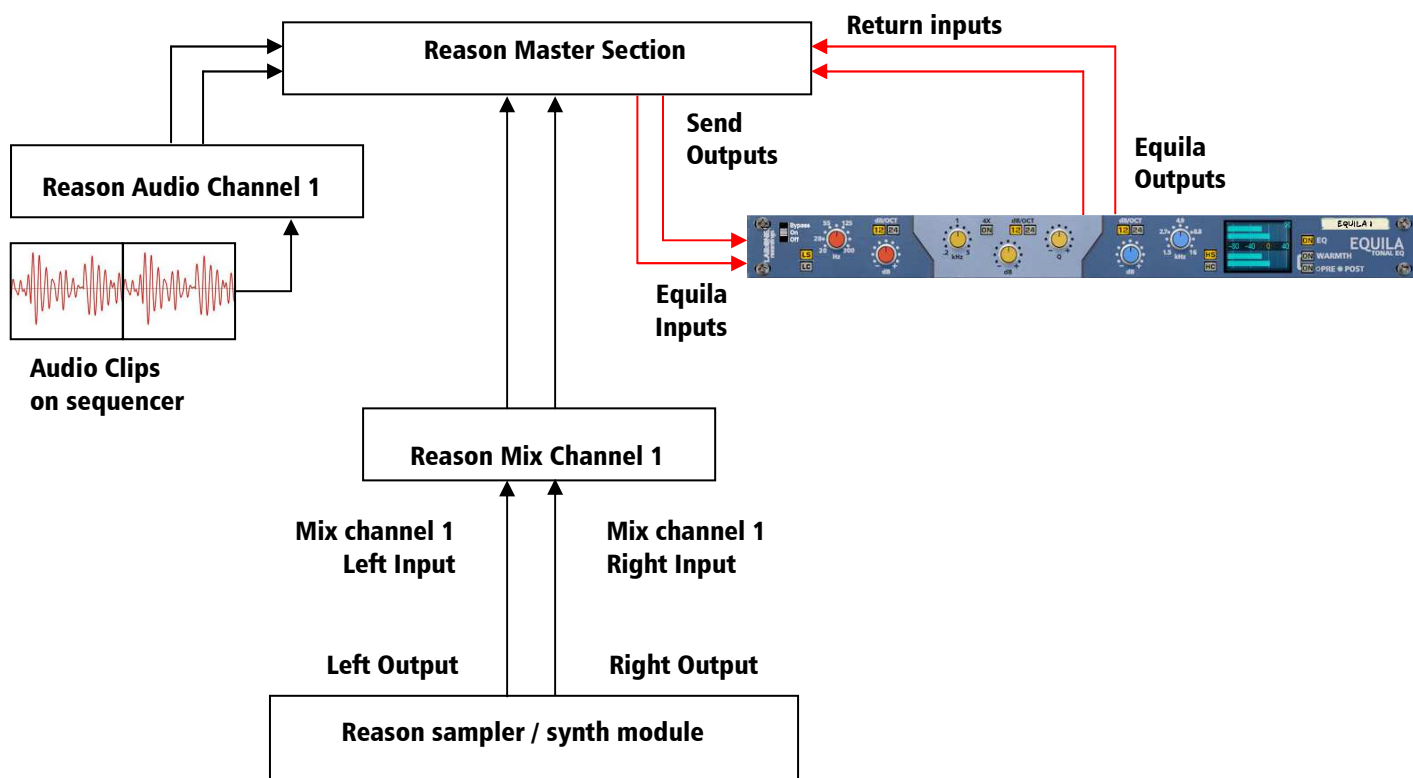
A) Using Equila as an insert (mix channel setup).



In setup (A), this would use Equila as an insert effect. This means that whatever control you adjust on Equila, it will affect the total sound coming out of the sampler / synth module. If Equila is in bypass mode, the audio playing would still sound 'clean' and unaffected.

To affect the sound, begin with adjusting the potentiometer controls – this can be level, frequency and for mid band resonance values. Using Low passing will 'dull' the sound by suppressing the higher frequencies, while High passing would remove some 'body' from the lower end of the frequency spectrum. The audio to be processed can vary in frequency (pitch) as well as level, so you can tweak the parameters freely to meet your needs. To help you, refer to Appendix 1: Frequency Band 'character' descriptions. Be aware of audio level when processing: the 'illusion' of louder tricks us into believing it is 'better'. Equalization should be done subjectively, to determine if the equalisation used is the correct treatment of the audio. Remember to equalize carefully, so not to make wrong decisions too quickly.

B) Using Equila as a send effect (mix / audio channel setup).



In setup (B), this would use Equila as a send effect. This means that whatever control you adjust on Equila, it will affect the sound coming from the Master Section at a set amount, determined by the Send Effect dial on that specific Mix / Audio channel. This means you can have a clean sound mixed with an altered equalized sound. This is known as Parallel Processing, and may be desired in some cases.

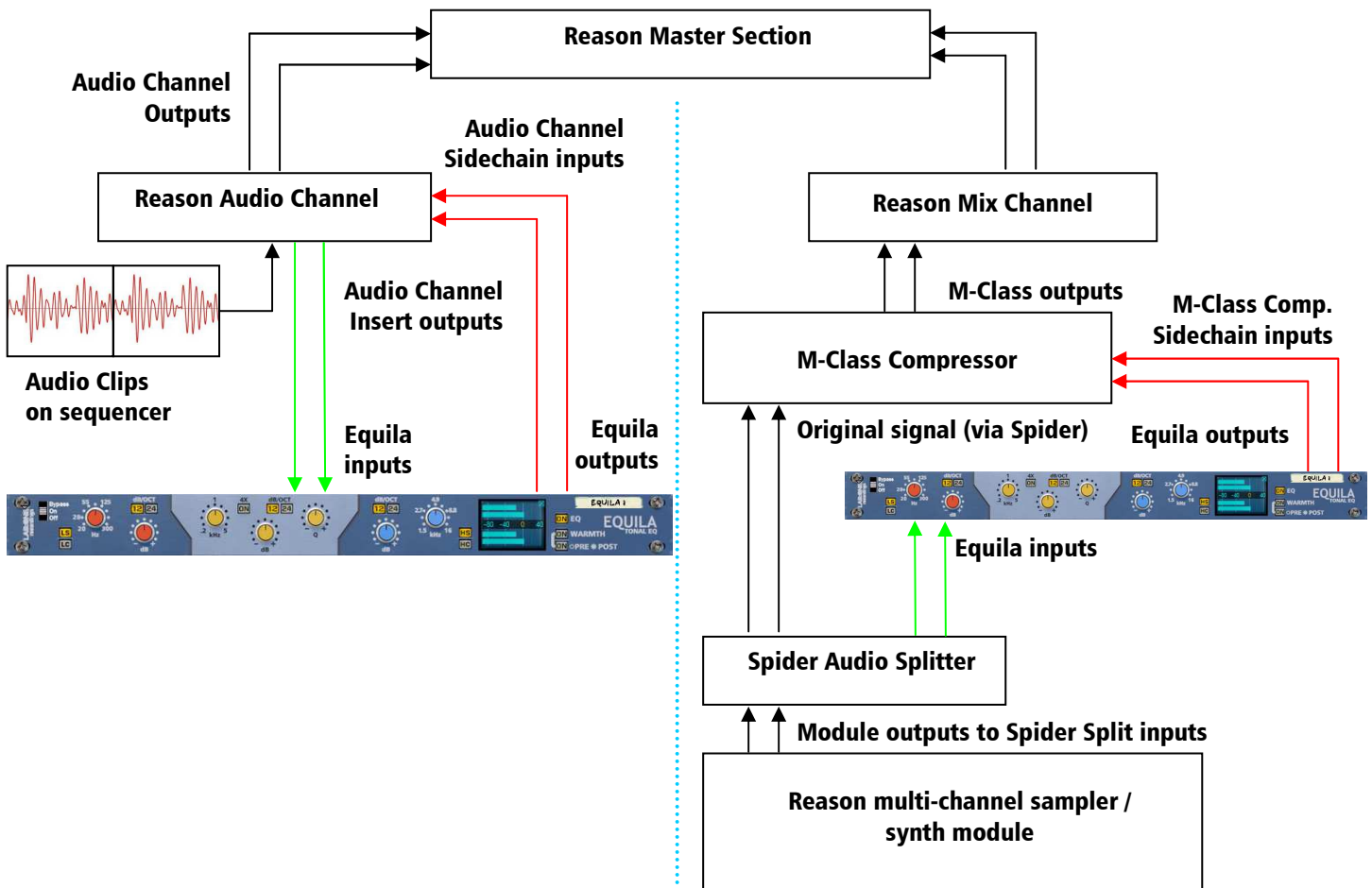
Again you can adjust Equila as mentioned in setup (A) above, with the addition of the SEND dial located on the Main Mixer in Reason. Full left setting of the SEND dial has no effect on the sound, while full right setting of the SEND dial will send a maximum level possible to Equila. This means you can have one Equila as a send device for all your audio channels. However, latency may have a side effect of cancellation of audio (aka phasing), due to the processing time needed to perform the filtering of Equila, when used as a Send effect.

Alternative setups

For devices which have multiple outputs (ie NN-XT, Redrum, Thor, Spider Audio), then if required additional Equila units could be added as either mono-devices (only connecting left audio input & output sockets), or as stereo devices. This in turn allows you to edit specific sounds within a preset if you so wish (ie split zone instrument patches may have a bass guitar for one half of the keymap, while a synth lead is using the other half, and you wish to effect the sounds independently). See the next page for more examples of setups.

Another possible option would be to use one instance of Equila, and have 2 mono devices linked into it (ie guitar lead and guitar bass), and process both inputs in parallel, and output the two signals to two separate mixer channels. This may be desired to help use the same eqing settings on two mono devices at the same time.

C) Using the Equila as an insert to a side-chain (mix / audio channel setup)



*Setup A:
Side-chaining the SSL Compressor*

*Setup B:
Side-chaining using M-Class Compressor*

Above you will see two alternative setups using Equila as part of a side-chain effect signal path. The method on the left utilises the Audio Channel insert sockets, to send signal from the Audio clips on the sequencer through the SSL desk channel strip. The insert sockets send the original signal to Equila, which then can alter the signal by using the band controls, to 'exaggerate' the signal more. Reason for doing this may be to use Equila to help with sibilance and plosive sounds which can be found in vocal recordings. From Equila the outputs are then fed into the channel strips own side-chain sockets, and the 'KEY' button will become active on the SSL desk, indicating that the side-chain functionality of the compressor found on the SSL desk is in operation.

Method 2 on the right shows a similar setup, but using a Spider Audio Splitter unit to divide the original signal / sound source into two parallel pairs of signals, one set is sent to the M-Class Compressor unit audio inputs, while the second pair from the Spider is sent to the audio inputs of Equila, and the outputs of Equila are connected to the side-chain input of the M-Class Compressor. This frees the side-chain of the SSL compressor, so another sound source could be used to control the main SSL dynamics for that channel strip.

Experiment with setups to your own way of working, use these as a guide, but not necessarily as the be-all-and-end-all approach.

Using the Dual Function Display

Equila comes with a dual functioning display. By default it is set to display the equalization curve (when EQ is ON). By simply clicking the display the view mode can change from EQ curve to meters and vice versa. This can be extremely useful for those who want to display the curve that is being applied to the audio signal, as well as checking the levels pre and post processing. Additionally, you can disable the view totally ('Ears only') mode, which may help you focus more on the sound rather than seeing the effect



Meters mode



EQ curve display mode



Ears only mode

The Input and Output Meters can be used to assess initial audio signal levels, and processed final output levels. The best way to use the meters is as follows;

- 1) Set the output of the sound module (synth / sampler / insert effect) so that the input meter on Equila is below the zero line – this aids your decisions later in and also helps to prevent any clipping if any louder signals come through the signal chain into Equila.
- 2) Use the band controls to your desired choice, be it boosting or cutting of frequencies.
- 3) Whilst affecting the signal within Equila, you may notice the Output meters may vary above or below the input levels. This is due to signal spectrum & frequency changes in relation to the adjustments you have made. To compensate, you may need to relevel the trim control on the SSL desk, or the channel fader to increase/reduce the output level; ideally aim to match the level of original signal level, so that you can match your audio signal levels better and so that volume is not a bias to your decisions.

NOTE: Equila can allow up to +40dB signal output maximum. Any higher than this level may result in hard clipping; If you find you are driving a loud signal through Equila, use the Warmth control in POST mode to soft-clip the signal and prevent digital hard clipping (also known as overs)

This method will help you to determine if your decisions relating to filter use and / or EQ band filtering are good or bad, without raising or lowering the level too much, which would be bias towards whether your EQing is right or wrong. Human nature determines louder sounds as 'better', even as little as 3dB gain can give the listener a 'false' pretence that a 3dB louder mix sounds better than a 0dB mix of the same material.

Selecting the different slopes and using the controls

Equila has dual mode slope function which allows for greater attenuation for the Low and High bands, plus a tighter resonance for the mod band. This helps make Equila a great device for gentle 'character' shaping to a more pronounced obvious effect.

The Low and High band employ 12dB and 24dB per octave slope function. This means that for every octave up / down (band depending) the audio level would reduce in that frequency range by that set amount. For example

300Hz Low pass filter with 12dB/Oct means that 150Hz (1 octave below) will output at 12dB lower than the signal level at 300Hz, 75Hz (2 octaves below) will output 12dB lower than 150Hz, 37.5Hz (3 octaves below) would be 12dB lower than 75Hz...

For shelving filters, the logic is still applied but due to the nature of shelving the range of the slope affects a shorter amount of frequencies and then 'level off' to work much alike a tone control on a car stereo (Bass / treble controls are shelving filters)

You may need to experiment to see which slope works best for your application.

The frequency controls set the frequency centre of the filters. This is the key 'start point' for filters, so Equila understands what signal to affect where across the frequency spectrum.

For the Mid band, Q (resonance) is added as a parametric band, which may focus better on smaller key areas, or could be used in a broad fashion much like a mid band 'bell' boost (revert to the car stereo analogy where Bass and Treble are shelves while Mid could be a wide Q EQ filter). Additionally, Mid band includes a 12dB/24dB per octave mode, to aid with tighter / wider resonance.

All 3 bands have frequency and gain controls. The frequency controls cover the ranges mentioned above. The gain controls for Low and High shelving, as well as Mid band EQ allow for +/-18dB level. When the Low / High band is set to Passing mode, the gain control allows you to re-level the audio post filter. This is added to allow for any level loss due to harder filtering.

The benefits of this can be useful, in respect to audio engineers, musicians and producers alike.

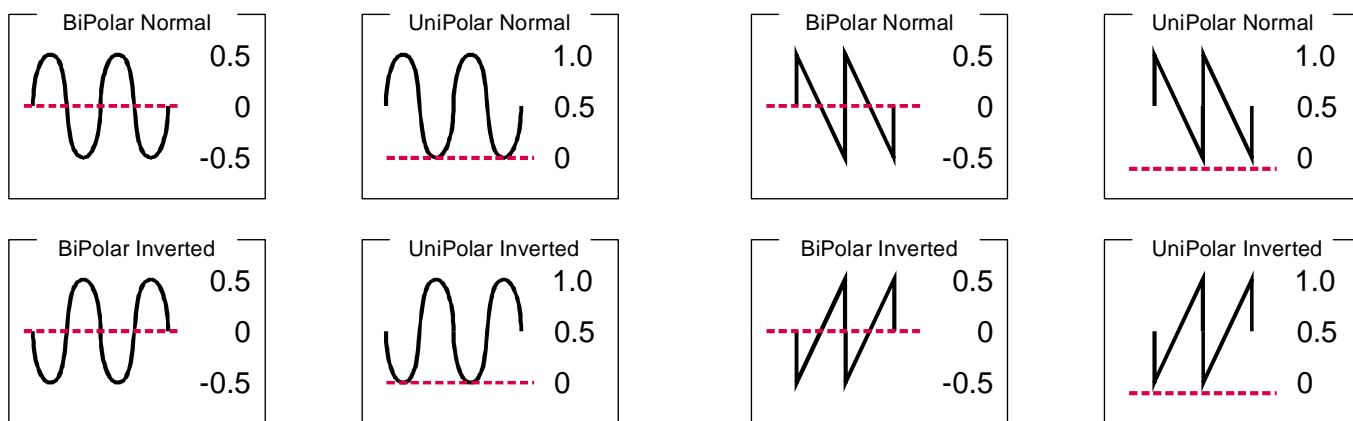
CV inputs and controls

Equila has a total of 7 CV inputs, with corresponding trim knobs (to scale CV input signals). The CV input sockets are unipolar by design but can allow bi-polar signal. Each of the 7 CV sockets connect to the 7 knob controls on the front of Equila, giving more creative use of the equalizer where the user sees best fit.

Each CV input has a corresponding label to the parameter the CV may control.

To use the CV inputs, simply connect a CV output from another device. Default settings for CV trim knobs are at maximum, so be aware of possible loud signals if using CV inputs whilst in 18 or 24dB modes.

In relation to the way CV works, polarities and inversions please see the illustration below



From the example above, we can see the effect of changing the polarity and bi-polar / uni-polar modes has on CV input signals.

NOTE. CV signal patching will remain only within Mixer / Audio Channel effect chains, or within a Combinator, and of course your template rack setups.

MIDI Implementation table

Below is a listing of all MIDI Control Change (CC) numbers, which can be applied to your choice of device.

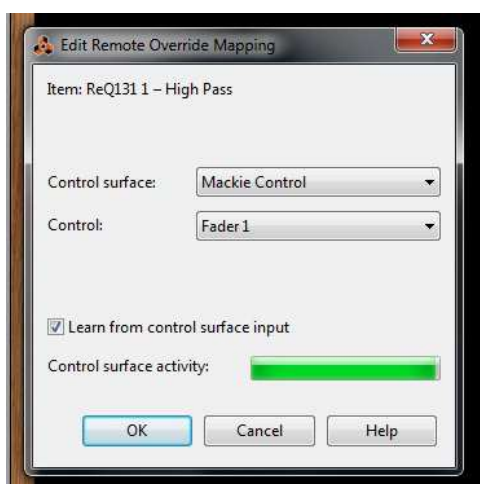
MIDI CC	Controls
12	Low Gain
13	Low Frequency
14	Low Slope Mode
15	Low Filter Type
16	Mid Frequency
17	Mid Resoance
18	Mid Gain
19	Mid Slope Mode
21	High Gain
26	Mid Band Frequency Multiply
20	High Frequency
23	High Slope Mode
22	High Filter Type
24	Warmth Pre/Post
25	Warmth Enable
27	EQ Enable

How to 'latch' your own MIDI via Remote Overriding

Reason allows the user to re-define certain controls via MIDI devices by using the Remote Override configuration. This means that a control on Equila can be mapped by any MIDI controller you have connected to your DAW. However, you can only map one specific control to any of the available Remote 'receiving' controls on the Rack Extension. Also, Remote Override controls are only saved within each independent Reason song file. Ideally, if you use a dedicated piece of MIDI equipment for Equila, a template start-up file would be a better option, so that the Remote Override template is pre-defined on each new song from the off.

All the controls on Equila are Remote Override-able. To access the override editor, select from the 'Options' Menu 'Edit Remote Overrides'. The Rack will now display the specific device selected, with either pre-defined Remote control indicators (the Remote symbol), yellow Lightning bolts (overridden Remote controls pre-defined) or blue arrows (unassigned Remote controls)

You can right-click one of the controls (except for the main EQ handles) and select 'Edit Remote override'. This will open a new popup window, with some available options, and to show you which MIDI controller is currently set to that specific Remote Override.



By moving one of the controls on your MIDI device (already pre-defined in Reason), you should then see MIDI activity indicator display that a MIDI message was received. Note also the control surface and the control itself on the MIDI device that was adjusted relays to the new Remote Override.

Once you are happy with the control being set, you can click 'OK' to continue with the new setting, or 'CANCEL' to abort the mapping. Also note that if you accept this mapping, the control (if already linked to another) will be fixed to the new mapping. Any previously set mappings will be 'moved' to the new mapped control. This should be used with care if you already have pre-defined Remote Override mappings.

This Remote Overriding method can be handy if you don't know how to set up your own MIDI controller to the dedicated MIDI controls mentioned in the previous chapter. For speed, you can simply double click a blue arrow, and the arrow will turn into a spinning yellow Lightning bolt, indicating that Reason is awaiting a MIDI signal to that control. You can then adjust a MIDI control on your MIDI device, and the control will map automatically without the need to use the popup previously mentioned. Double-click each specific control you want to map to save time and to use the mapping in a faster method.

All Remote Overrides can then be used to record automation within Reason, which can be fine tuned using the Sequencer and the clips (see the Reason Operating Manual for more information on how to edit & record automation)

Appendix 1:

Instrument Frequency ranges

To understand EQ and its intricacies you need hands-on experience, but through practice and use of Equila you will start to become accustomed to certain 'ranges' of the frequency spectrum.

Also, every sound that you use may sound different to someone else, even if you use the same sound – different variables come into play (amplitude, pitch, envelope, bit rate,.. etc.), so you need to keep in mind that the below listed frequency settings can be used with 'a pinch of salt'; EQing is like seasoning of your sound, it adds flavour (and can also take it away too).

The Kick Drum

Any apparent muddiness can be rolled off around 300Hz. Try a small boost around 5-7kHz to add some high end.

50-100Hz ~ Adds bottom to the sound

100-250Hz ~ Adds roundness

250-800Hz ~ Muddiness Area

5-8kHz ~ Adds high end presence

8-12kHz ~ Adds Hiss

The Snare

Try a small boost around 60-120Hz if the sound is a little too wimpy. Try boosting around 6kHz for that 'snappy' sound.

100-250Hz ~ Fills out the sound

6-8kHz ~ Adds presence

The Hi hats, The Cymbals, The Rides & The Other High-end Percussive sounds

Any apparent muddiness can be rolled off around 300Hz. To add some brightness try a small boost around 3kHz.

250-800Hz ~ Muddiness area

1-6kHz ~ Adds presence

6-8kHz ~ Adds clarity

8-12kHz ~ Adds brightness

The Bass

Try boosting around 60Hz to add more body. Any apparent muddiness can be rolled off around 300Hz.

If more presence is needed, boost around 6kHz.

50-100Hz ~ Adds bottom end

100-250Hz ~ Adds roundness

250-800Hz ~ Muddiness Area

800-1kHz ~ Adds beef to small speakers

1-6kHz ~ Adds presence

6-8kHz ~ Adds high-end presence

8-12kHz ~ Adds hiss

The Vocal

This is a difficult one, as it depends on the microphone that was used to record the vocal. Apply either cut or boost around 300hz. Apply a very small boost around 6kHz to add some clarity.

100-250Hz ~ Adds 'up-frontness'
250-800Hz ~ Muddiness area
1-6kHz ~ Adds presence
6-8kHz ~ Adds sibilance and clarity
8-12kHz ~ Adds brightness

The Piano

Any apparent muddiness can be rolled off around 300Hz. Apply a very small boost around 6kHz to add some clarity.

50-100Hz ~ Adds bottom
100-250Hz ~ Adds roundness
250-1kHz ~ Muddiness area
1-6kHz ~ Adds presence
6-8kHz ~ Adds clarity
8-12kHz ~ Adds hiss

The Electric Guitar

Again this depends on the mix and the recording. Apply either cut or boost around 300hz, depending on the song and sound. Try boosting around 3kHz to add some edge to the sound, or cut to add some transparency. Try boosting around 6kHz to add presence. Try boosting around 10kHz to add brightness.

100-250Hz ~ Adds body
250-800Hz ~ Muddiness area
1-6 kHz ~ Cuts through the mix
6-8 kHz ~ Adds clarity
8-12 kHz ~ Adds hiss

The Acoustic Guitar

Any apparent muddiness can be rolled off between 100-300Hz. Apply small amounts of cut around 1-3 kHz, to push the image higher. Apply small amounts of boost around 5 kHz to add some presence.

100-250Hz ~ Adds body
6-8kHz ~ Adds clarity
8-12kHz ~ Adds brightness

The Strings

These depend entirely on the mix and the sound used.

50-100Hz ~ Adds bottom end
100-250Hz ~ Adds body
250-800Hz ~ Muddiness area
1-6hHz ~ Sounds crunchy
6-8kHz ~ Adds clarity
8-12kHz ~ Adds brightness

Appendix 2: EQ Tables

Below is a general guide to what specific frequencies may do to your sounds / mix.

50 Hz

- 1. Increase to add more fullness to lowest frequency instruments like foot, toms, and the bass.**
- 2. Reduce to decrease the "boom" of the bass and will increase overtones and the recognition of bass line in the mix. This is most often used on bass lines in Rap and R&B.**

100 Hz

- Increase to add a harder bass sound to lowest frequency instruments.**
Increase to add fullness to guitars, snare.
Increase to add warmth to piano and horns.
Reduce to remove boom on guitars & increase clarity.

200 Hz

- 1. Increase to add fullness to vocals.**
- 2. Increase to add fullness to snare and guitar (harder sound).**
- 3. Reduce to decrease muddiness of vocals or mid-range instruments.**
- 4. Reduce to decrease gong sound of cymbals.**

400 Hz

- 1. Increase to add clarity to bass lines especially when speakers are at low volume.**
- 2. Reduce to decrease "cardboard" sound of lower drums (foot and toms).**
- 3. Reduce to decrease ambiance on cymbals.**

800 Hz

- 1. Increase for clarity and "punch" of bass.**
- 2. Reduce to remove "cheap" sound of guitars**

1.5 KHz

- 1. Increase for "clarity" and "pluck" of bass.**
- 2. Reduce to remove dullness of guitars.**

3 KHz

- 1. Increase for more "pluck" of bass.**
- 2. Increase for more attack of electric / acoustic guitar.**
- 3. Increase for more attack on low piano parts.**
- 4. Increase for more clarity / hardness on voice.**
- 5. Reduce to increase breathy, soft sound on background vocals.**
- 6. Reduce to disguise out-of-tune vocals / guitars**

5 KHz

- 1. Increase for vocal presence.**
- 2. Increase low frequency drum attack (foot/toms).**
- 3. Increase for more "finger sound" on bass.**
- 4. Increase attack of piano, acoustic guitar and brightness on guitars.**
- 5. Reduce to make background parts more distant.**
- 6. Reduce to soften "thin" guitar.**

7 KHz

- 1. Increase to add attack on low frequency drums (more metallic sound).**
- 2. Increase to add attack to percussion instruments.**
- 3. Increase on dull singer.**
- 4. Increase for more "finger sound" on acoustic bass.**
- 5. Reduce to decrease "s" sound on singers.**
- 6. Increase to add sharpness to synthesizers, rock guitars, acoustic guitar and piano.**

10KHz

- 1. Increase to brighten vocals.**
- 2. Increase for "light brightness" in acoustic guitar and piano.**
- 3. Increase for hardness on cymbals.**
- 4. Reduce to decrease "s" sound on singers.**

15KHz

- 1. Increase to brighten vocals (breath sound).**
- 2. Increase to brighten cymbals, string instruments and flutes.**
- 3. Increase to make sampled synthesizer sound more real.**

LAB:ONE RECORDINGS. LICENSE AGREEMENT

YOU SHOULD CAREFULLY READ ALL OF THE FOLLOWING TERMS AND CONDITIONS BEFORE USING THIS PRODUCT. INSTALLING AND USING THE PRODUCT INDICATES YOUR ACCEPTANCE OF THESE TERMS AND CONDITIONS. IF YOU DO NOT AGREE WITH THEM, YOU SHOULD PROMPTLY RETURN THE PRODUCT UNUSED AND YOUR MONEY WILL BE REFUNDED.

1. **GRANT OF LICENSE.** In consideration of payment of the license fee, Lab:One Recordings. ("LAB:ONE" or the "Licensor") grants to you, the Licensee, a nonexclusive license to have one person use the enclosed LAB:ONE software product (the "Product") on one personal computer at a time. If you want to use the Product on more than one personal computer at a time, or if you want to network the Product, you must obtain separate licenses from LAB:ONE by contacting them via info@lab-one-recordings.co.uk.

This license does not grant you any right to any enhancement or update to the Product. Enhancements and updates, if available, may be obtained by you at LAB:ONE's then current standard pricing, terms and conditions.

2. **OWNERSHIP OF THE PRODUCT.** Portions of the Product incorporate certain material proprietary to third parties. LAB:ONE and licensors of LAB:ONE own and will retain all title, copyright, trademark and other proprietary rights in and to the Product. This License is NOT a sale of the Product or any copy of it. You, the Licensee, obtain only such rights as are provided in this Agreement. You understand and agree as follows:

2.1. You may NOT make any copies of all or any part of the Product except for archival copies of the computer software components of the Product as permitted by law,

2.2. You may NOT reverse compile, reverse assemble, reverse engineer, modify, incorporate in whole or in part in any other product or create derivative works based on all or any part of the Product.

2.3. You may NOT remove any copyright, trademark, proprietary rights, disclaimer or warning notice included on or embedded in any part of the Product.

2.4. You may NOT transfer the Product. If transferred, in whole or in part, the original and subsequent owners forfeit all rights to use the software.

2.5 You may not use the documentation for any purpose other than to support your use of the SOFTWARE PRODUCT.

2.6 You may not perform engineering analyses of the SOFTWARE PRODUCT, including performance analyses, or benchmark analyses, without the written permission of LAB:ONE.

3. INSTRUMENT CONTENT

3.1 The audio samples, recorded sounds, programs, MIDI patterns used by any instrument ("instrument content") included with the Product remain the property of Licensor and are licensed, not sold, to you for use on your computer.

3.2 The Licensee may modify the instrument content. LICENSEE MAY USE THE INSTRUMENT CONTENT FOR COMMERCIAL PURPOSES WITHIN MUSICAL COMPOSITIONS.

3.3. This license expressly forbids resale, re licensing or other distribution of the instrument content, either as they exist on these discs, or any modification thereof. You cannot sell, loan, rent, lease, assign or transfer all or any of the enclosed sounds to another user, or for use in any competitive product.

4. **DEMO or THIRD PARTY DEMO CONTENT RESTRICTIONS.** Unless specified elsewhere in your product package, the following restrictions apply to all digitally recorded sounds, MIDI or song files or rhythm patterns, and printed or digitally reproduced sheet music contained in the product package (the "demo content"): All demo content is protected by copyright and owned by LAB:ONE or other parties that have licensed these works to LAB:ONE. Any duplication, adaptation, or arrangement of the demo content without written consent of the owner is an infringement of UK, or foreign copyright law and subject to the penalties and liabilities provided therein. You may not synchronize the demo content with any videotape or film, or print the demo content in the form of standard music notation, without the express written permission of the copyright owner. The demo content may not be used for broadcast or transmission of any kind. You may not resell or redistribute the demo content "as is" (i.e., stand alone) in any way, including for use in sampling or sample playback units, or in any sound library product, or in any radio or television broadcast, soundtrack, film or other commercial product in any media, whether the works remain in their original form or are reformatted, mixed, filtered, re-synthesized or otherwise edited.

5. **LICENSEE'S RESPONSIBILITIES FOR SELECTION AND USE OF THE PRODUCT.** Lab One Recordings hopes the Product will be useful to your business or personal endeavors. HOWEVER, Lab One Recordings DOES NOT WARRANT THE OPERATION OF THE PRODUCT OR THE ACCURACY OR COMPLETENESS OF ANY INFORMATION CONTAINED IN THE PRODUCT. You, and not LAB:ONE, are responsible for all uses of the Product.

6. WARRANTY.

6.1. **Limited Warranty.** Subject to the other provisions in Articles 4 and 5 of this Agreement, LAB:ONE warrants to you, the original licensee, that the media on which the Product is recorded will be free of defects in material and workmanship under normal use for a period of thirty (30) days from purchase, and that the Product will perform substantially in accordance with the user guide for a period of thirty (30) days from purchase. LAB:ONE's sole responsibility under this warranty will be, at its option, (1) to use reasonable efforts to correct any defects that are reported to it within the foregoing warranty period or (2) to refund the full purchase price. LAB:ONE does not warrant that the Product will be error free, nor that all program errors will be corrected. In addition, LAB:ONE makes no warranties if the failure of the Product results from accident, abuse or misapplication. Outside the United Kingdom, these remedies are not available without proof of purchase from an authorized international source. All requests for warranty assistance shall be directed to LAB:ONE at the following address:

Lab:One Recordings, 41 Sedbergh Road, Corby, Northants, NN18 0NT, UK

6.2. **Limitations on Warranties.** THE EXPRESS WARRANTY SET FORTH IN THIS ARTICLE 4 IS THE ONLY WARRANTY GIVEN BY LAB:ONE WITH RESPECT TO THE ENTIRE PRODUCT; LAB:ONE MAKES NO OTHER WARRANTIES, EXPRESS, IMPLIED OR ARISING BY CUSTOM OR TRADE USAGE, AND SPECIFICALLY DISCLAIMS THE IMPLIED WARRANTIES OF NON-INFRINGEMENT, MERCHANTABILITY OR FITNESS FOR ANY PARTICULAR PURPOSE. LAB:ONE SHALL NOT BE HELD RESPONSIBLE FOR THE PERFORMANCE OF THE PRODUCT NOR FOR ANY LIABILITY TO ANY OTHER PARTY ARISING OUT OF USE OF THE PRODUCT.

SOME COUNTRIES/STATES DO NOT ALLOW LIMITATIONS ON HOW LONG AN IMPLIED WARRANTY LASTS, SO THE ABOVE LIMITATION MAY NOT APPLY TO YOU. THIS WARRANTY GIVES YOU SPECIFIC LEGAL RIGHTS, AND YOU MAY ALSO HAVE OTHER RIGHTS WHICH VARY FROM STATE TO STATE.

7. **LIMITATIONS ON REMEDIES.** LAB:ONE's liability in contract, tort or otherwise arising in connection with the Product shall not exceed the purchase price of the Product. IN NO EVENT SHALL LAB:ONE BE LIABLE FOR SPECIAL, INCIDENTAL, TORT OR CONSEQUENTIAL DAMAGES (INCLUDING ANY DAMAGES RESULTING FROM LOSS OF USE, LOSS OF DATA, LOSS OF PROFITS OR LOSS OF BUSINESS) ARISING OUT OF OR IN CONNECTION WITH THE PERFORMANCE OF THE PRODUCT, EVEN IF LAB:ONE HAS BEEN ADVISED OF THE POSSIBILITY OF SUCH DAMAGES.

SOME COUNTRIES/STATES DO NOT ALLOW THE EXCLUSION OR LIMITATION OF INCIDENTAL OR CONSEQUENTIAL DAMAGES SO THE ABOVE EXCLUSION OR LIMITATION MAY NOT APPLY TO YOU.

8. U.S. GOVERNMENT RESTRICTED RIGHTS. If you are a government agency, you acknowledge that the Product was developed at private expense and that the computer software component is provided to you subject to RESTRICTED RIGHTS. The rights of the government regarding its use, duplication, reproduction or disclosure by the Government is subject to the restrictions set forth in subparagraph (c)(1)(ii) of the rights in Technical Data and Computer Software clause at DFARS 252.227-7013, and (c)(1) and (2) of the Commercial Computer Software -- Restricted Rights clause at FAR 52.227-19. Contractor is Lab One Recordings.

9. TERMINATION. This License Agreement will terminate immediately if you breach any of its terms. Upon termination, you will be required promptly to return to LAB:ONE or to destroy all copies of the Product covered by this License Agreement.

19

10. MISCELLANEOUS.

10.1. Governing Law. The terms of this License shall be construed in accordance with the substantive laws of the United States and/ or Commonwealth of Massachusetts, U.S.A.

10.2. No Waiver. The failure of either party to enforce any rights granted hereunder or to take any action against the other party in the event of any breach hereunder shall not be deemed a waiver by that party as to subsequent enforcement of rights or subsequent actions in the event of future breaches.

10.3. Litigation Expenses. If any action is brought by either party to this Agreement against the other party regarding the subject matter hereof, the prevailing party shall be entitled to recover, in addition to any other relief granted, reasonable attorneys' fees and litigation expenses.

10.4. Unenforceable Terms. Should any term of this License Agreement be declared void or unenforceable by any court of competent jurisdiction, such declaration shall have no effect on the remaining terms hereof.

YOU ACKNOWLEDGE THAT YOU HAVE READ THIS LICENSE AGREEMENT, UNDERSTAND IT AND AGREE TO BE BOUND BY ITS TERMS AND CONDITIONS. YOU FURTHER AGREE THAT IT IS THE COMPLETE AND EXCLUSIVE STATEMENT OF THE LICENSE AGREEMENT BETWEEN YOU AND LAB ONE RECORDINGS WHICH SUPERSEDES ANY PROPOSALS, OR PRIOR AGREEMENT, ORAL OR WRITTEN, AND ANY OTHER COMMUNICATIONS BETWEEN YOU AND LAB ONE RECORDINGS RELATING TO THE SUBJECT MATTER OF THIS LICENSE AGREEMENT.

